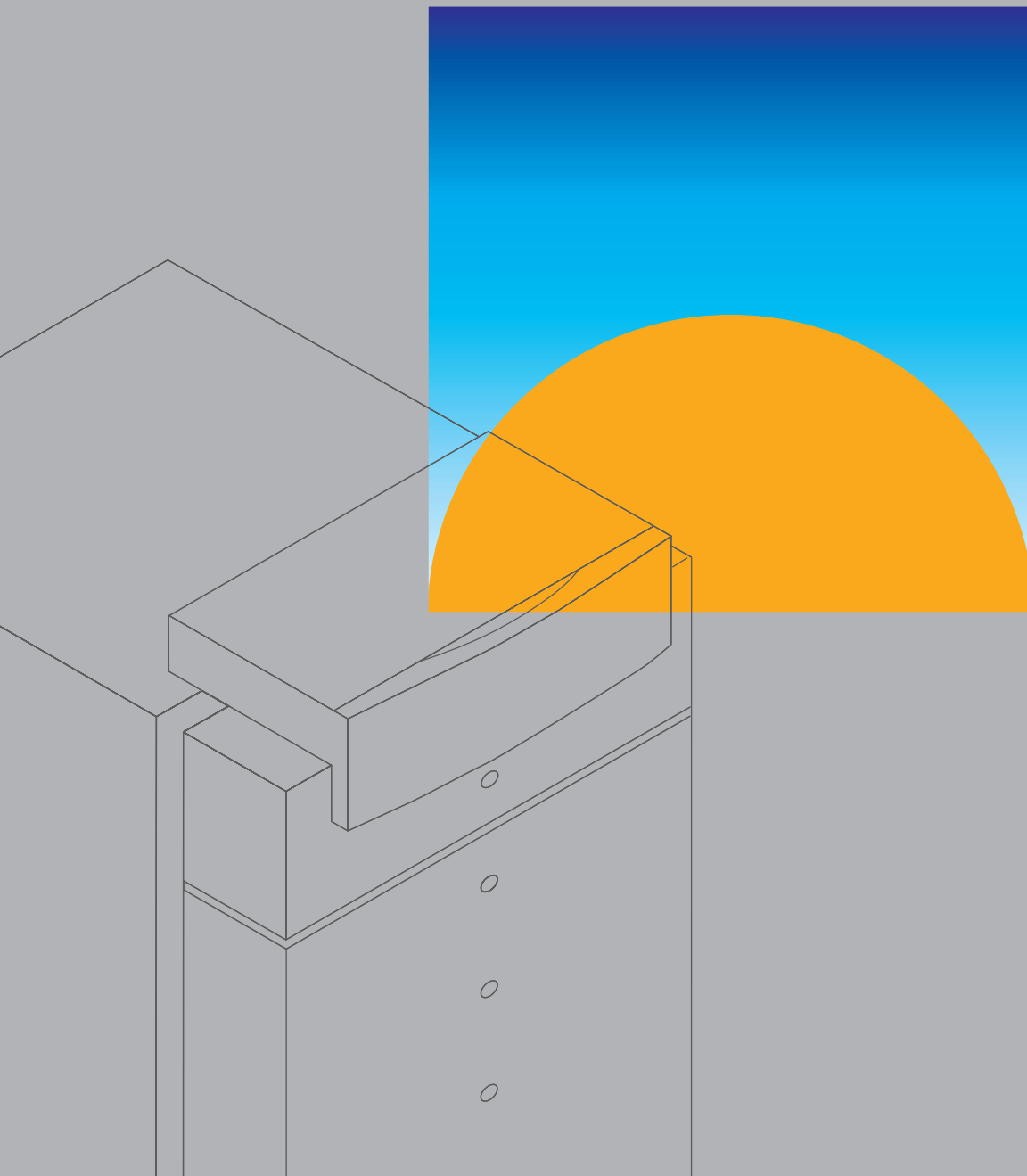


Atmospheric gas-fired hot water heating boiler
Rated input: 90 to 380 MBH

VIESSMANN

VITOGAS 100

*Gas-fired hot water heating boiler with
high-alloy stainless steel premix burner*



VITOGAS 100

With gray cast iron heat exchanger surface

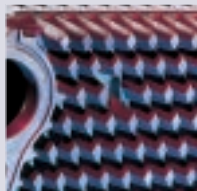
Atmospheric gas-fired hot water heating boiler

Rated input: 90 to 380 MBH

Top performance in a small package. Apart from saving space, the Vitogas 100, GS1 is economical in terms of its energy consumption with reduced emissions. For larger heat demand the Vitogas 100, GS10 with two-stage burners is the ideal solution.

The benefits at a glance:

- **High operational reliability and a long service life** thanks to its construction of special high-grade cast iron with lamellar graphite and a low thermal load on the heat exchanger surface
- **Clean combustion** due to atmospheric premix burner with super-stoichiometric premixing: NO_x < 27.9 ppm (air-free), CO < 9.2 ppm (air-free). Vitogas 100 hereby meets the specifications of the German "Blue Angel" environmental certificate, Swiss Clean Air Regulations and California Regulations (SCAQMD).
- High efficiency
AFUE: up to 85.6% (GS1)
Combustion Efficiency: up to 85.6% (GS10)
- Intermittent ignition system provides soft, quiet and **extremely reliable ignition.**
- **Compact dimensions** – therefore suitable for installation in small rooms and alcoves
- Low weight and compact design for **easy transportation**
- Vitogas 100, GS10 supplied with a cast iron heat exchanger block and a separate insulation jacket



Special gray cast iron heat exchanger surface



**Vitogas 100, GS1
rated input:
90 to 240 MBH**

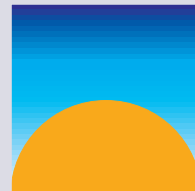


**Vitogas 100, GS10
rated input: 300 to 380 MBH**

VIESSMANN

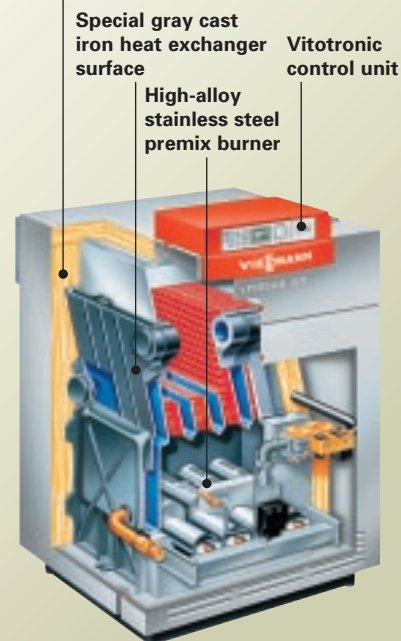
Viessmann Manufacturing Company Inc.
750 McMurray Road
Waterloo, ON • N2V 2G5 • Canada
Tel.: (519) 885-6300 Fax: (519) 885-0887

Viessmann Manufacturing Company (U.S.) Inc.
83 Vermont Avenue, Building #3
Warwick, RI • 02888 • U.S.A.
Tel.: (401) 732-0667 Fax: (401) 732-0590



VITOGAS 100		Model	GS1-	22	29	35	42	48	60
Rated input		MBH	90	115	145	165	190	240	
Total dimensions	Length	inches	33¼	33¼	34	34	34	34	34
	Width	inches	25½	25½	33	33	36½	43¼	
	Height	inches	33¼	33¼	33¼	33¼	33¼	33¼	
	Model	GS10-	72	84	96				
Rated input	full load	MBH	300	340	380				
	partial load	MBH	210	238	266				
Total dimensions	Length	inches	37	37	42				
	Width	inches	40	44	48				
	Height	inches	43	43	43				

Highly effective insulation



Technical information subject to change without notice.